

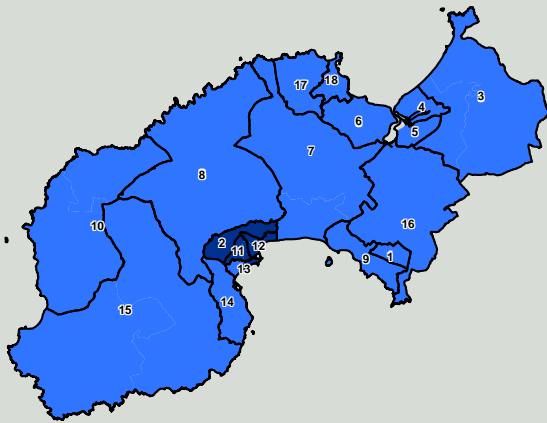


## Deprivation: a national perspective

This map shows differences in deprivation between small areas in this local authority, *compared to the whole of England* (based on IMD 2007).

### National deprivation groups

- 1 Least deprived fifth of areas in England
- 2
- 3
- 4
- 5 Most deprived fifth of areas in England



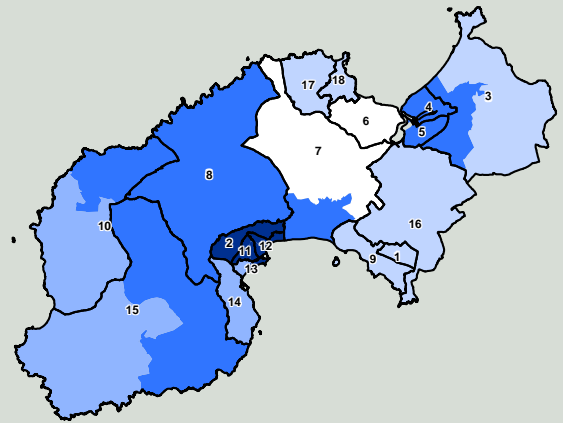
Based on Ordnance Survey material. © Crown Copyright. All rights reserved. DH 1000.20.290 2008

## Deprivation: a local perspective

This map shows differences in deprivation between small areas in this local authority, *compared to the local authority as a whole* (based on IMD 2007).

### Local deprivation groups

- 1 Least deprived fifth in this local authority
- 2
- 3
- 4
- 5 Most deprived fifth in this local authority



Based on Ordnance Survey material. © Crown Copyright. All rights reserved. DH 1000.20.290 2008

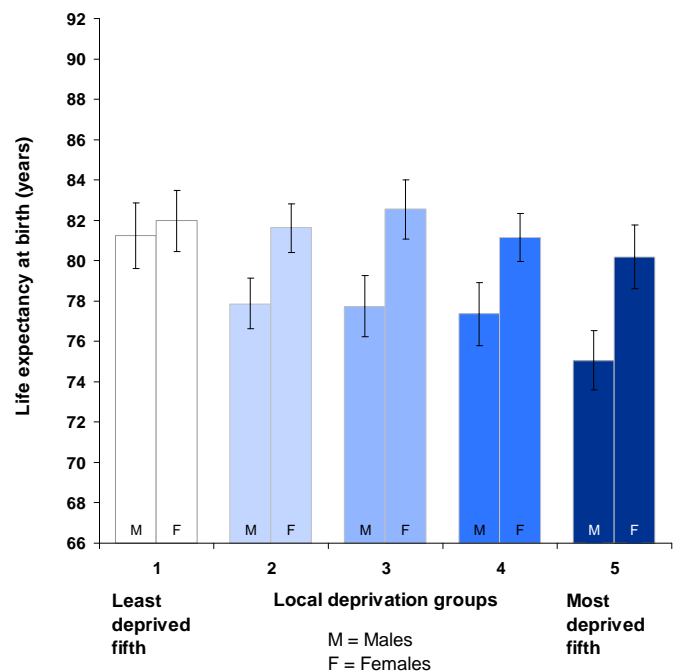
## Ward legend

- 1 Goldsithney
- 2 Gulval and Heamoor
- 3 Gwinear, Gwithian and Hayle East
- 4 Hayle North
- 5 Hayle South
- 6 Lelant and Carbis Bay
- 7 Ludgvan and Towednack
- 8 Madron and Zennor
- 9 Marazion and Perranuthnoe
- 10 Morvah, Pendeen and St Just
- 11 Penzance Central
- 12 Penzance East
- 13 Penzance Promenade
- 14 Penzance South
- 15 St Buryan
- 16 St Erth and St Hilary
- 17 St Ives North
- 18 St Ives South

Ward boundaries 2005 are superimposed upon MSA (Middle Super Output Area) boundaries. Each MSA is shaded by Index of Multiple Deprivation (IMD) 2007. For details refer to [www.communities.gov.uk](http://www.communities.gov.uk). Numbers correspond to ward legend. Ward boundaries may have changed.

## Health inequalities: a local perspective

Inequalities in life expectancy (2002-2006) for men and women who live in areas with different levels of deprivation (within this local authority).



95% confidence interval. These indicate the level of uncertainty about each value on the graph. Longer/wider intervals mean more uncertainty. When two intervals do not overlap it is reasonably certain that the two groups are truly different.

## Health inequalities: changes over time

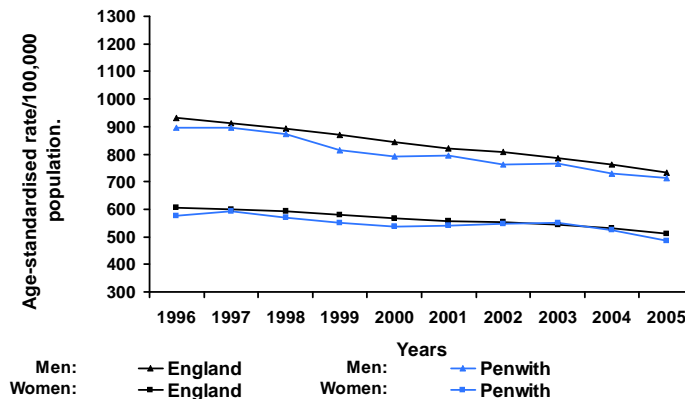
These trend graphs show how changes in health for this local authority compare with changes for the whole of England. Data points are mid-points of 3 year moving averages of annual rates i.e. 1996 represents the 3 year period 1995-97.

Trend 1 compares death rates (at all ages and from all causes) in this local authority with those for England.

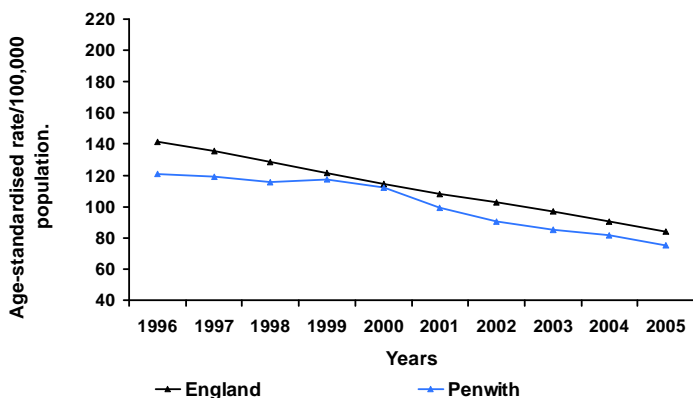
Trend 2 compares rates of early death from heart disease and stroke (in people under 75) in this local authority with those for England.

Trend 3 compares rates of early death from cancer (in people under 75) in this local authority with those for England.

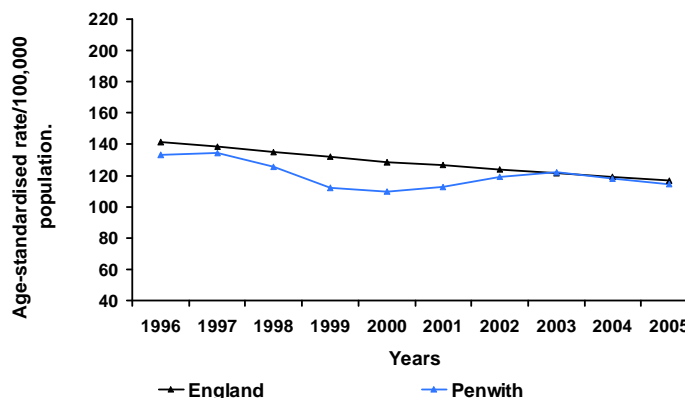
### Trend 1: All age, all cause mortality



### Trend 2: Early death rates from heart disease and stroke



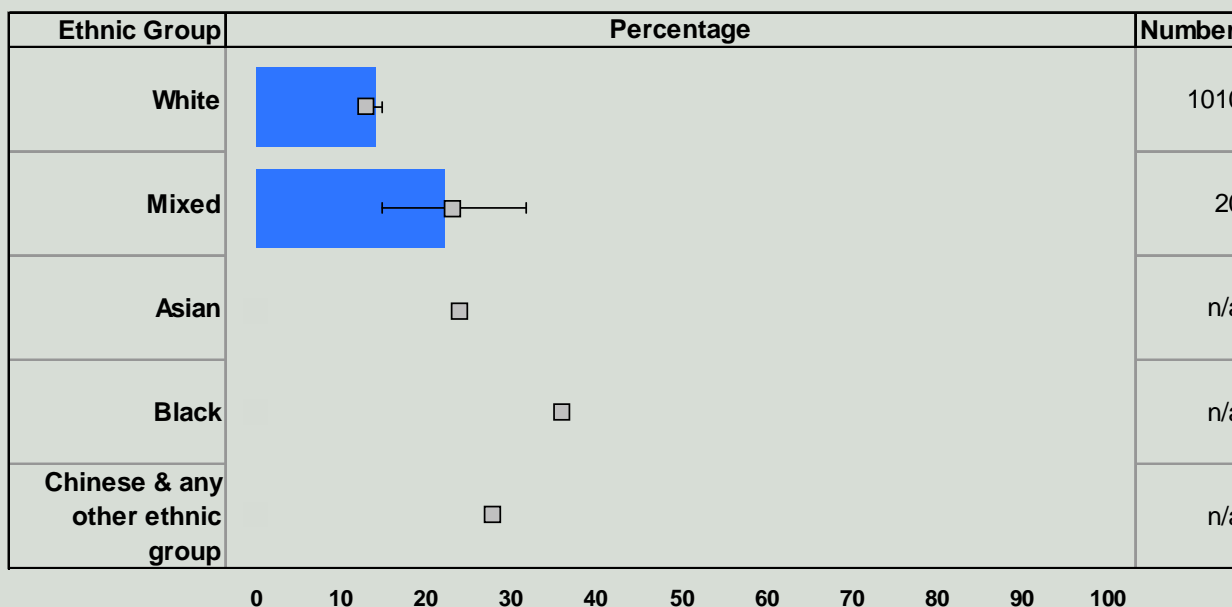
### Trend 3: Early death rates from cancer



## Health inequalities: ethnicity

This chart compares the percentage of children in each ethnic group who are eligible for free school meals (2007). Eligibility for free school meals is an indicator of deprivation, and people who suffer more deprivation tend to have poorer health. Comparing deprivation by ethnic group helps identify potential health inequalities between groups.

### Percentage and number of children eligible for free school meals

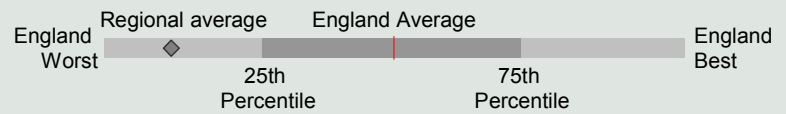


# Health summary for Penwith

The chart below shows how people's health in this local authority compares to the rest of England. The local result for each indicator is shown as a circle, against the range of results for England which is shown as a bar. A green circle may still indicate an important public health problem.

- Significantly worse than England average
- Not significantly different from England average
- Significantly better than England average
- No significance can be calculated

\* relates to National Indicator 2007



Domain	Indicator	Local No. Per Year	Local Value	Eng Avg	Eng Worst	England Range	Eng Best
Our communities	<b>1</b> Deprivation	18433	28.7	19.9	89.2	[Red circle]	0.0
	<b>2</b> Children in poverty *	2645	24.3	22.4	66.5	[Red circle]	6.0
	<b>3</b> Statutory homelessness	159	5.0	4.4	14.4	[Yellow circle]	0.0
	<b>4</b> GCSE achievement (5 A*-C) *	380	50.9	60.1	35.8	[Red circle]	82.7
	<b>5</b> Violent crime	896	14.0	19.3	38.9	[Green circle]	4.5
	<b>6</b> Carbon emissions *	387	6.1	7.6	20.6	[White circle]	4.6
Children and young people's health	<b>7</b> Smoking in pregnancy	109	20.2	16.1	38.8	[Red circle]	4.4
	<b>8</b> Breast feeding initiation *	387	71.7	69.2	33.2	[Yellow circle]	90.9
	<b>9</b> Physically active children *	6496	87.4	85.7	63.3	[Green circle]	99.2
	<b>10</b> Obese children *	29	8.5	9.9	16.1	[Yellow circle]	4.9
	<b>11</b> Children's tooth decay (at age 5)	n/a	1.5	1.5	3.2	[White circle]	0.4
	<b>12</b> Teenage pregnancy (under 18) *	44	39.3	41.1	83.1	[Yellow circle]	12.5
Adults' health and lifestyle	<b>13</b> Adults who smoke *	n/a	23.5	24.1	40.9	[Yellow circle]	13.7
	<b>14</b> Binge drinking adults	n/a	15.2	18.0	28.9	[Green circle]	9.7
	<b>15</b> Healthy eating adults	n/a	27.0	26.3	14.2	[Yellow circle]	45.8
	<b>16</b> Physically active adults	n/a	13.8	11.6	7.5	[Green circle]	17.2
	<b>17</b> Obese adults	n/a	22.4	23.6	31.2	[Yellow circle]	11.9
Disease and poor health	<b>18</b> Under-15s 'not in good health'	131	12.8	11.6	20.8	[Yellow circle]	6.4
	<b>19</b> Incapacity benefits for mental illness *	1400	37.6	27.5	68.6	[Red circle]	8.4
	<b>20</b> Hospital stays related to alcohol *	212	326.5	260.3	741.1	[Red circle]	87.6
	<b>21</b> Drug misuse	327	8.1	9.9	34.9	[White circle]	1.3
	<b>22</b> People diagnosed with diabetes	2475	3.7	3.7	5.9	[Yellow circle]	2.1
	<b>23</b> Sexually transmitted infections						
	<b>24</b> New cases of tuberculosis	0	0.0	15.0	102.0	[Green circle]	0.0
	<b>25</b> Hip fracture in over-65s	87	422.4	479.8	699.8	[Yellow circle]	219.0
Life expectancy and causes of death	<b>26</b> Life expectancy - male *	n/a	77.6	77.3	73.0	[Yellow circle]	83.1
	<b>27</b> Life expectancy - female *	n/a	82.0	81.6	78.3	[Yellow circle]	87.2
	<b>28</b> Infant deaths	2	4.3	5.0	10.3	[Yellow circle]	0.0
	<b>29</b> Deaths from smoking	152	227.3	225.4	355.0	[Yellow circle]	139.4
	<b>30</b> Early deaths: heart disease & stroke *	66	75.2	84.2	142.4	[Yellow circle]	39.7
	<b>31</b> Early deaths: cancer *	98	114.2	117.1	167.8	[Yellow circle]	76.7
	<b>32</b> Road injuries and deaths *	22	34.8	56.3	194.6	[Green circle]	20.8

**Note** (numbers in bold refer to the above indicators)

1 % of people in this area living in 20% most deprived areas of England 2005 2 % of children living in families receiving means-tested benefits 2005 3 Crude rate per 1,000 households 2005-2006 4 % at Key Stage 4 2006-2007 5 Recorded violence against the person crimes (crude rate per 1,000 population) 2006-2007 6 Total end user CO2 emissions per capita (tonnes CO2 per resident) 2005 7 % of mothers smoking in pregnancy where status is known 2006-2007 8 % of mothers initiating breast feeding where status known 2006-2007 9 % 5-16 year olds who spend at least 2 hrs/wk on high quality PE and school sport 2006-2007 10 % Schoolchildren in Reception year. 2006-2007 11 Average (mean) number of teeth per child which were actively decayed, filled, or had been extracted (age 5) 2005-2006 12 Under-18 conception rate per 1,000 females (crude rate) 2004-2006 (provisional) 13 % Modelled estimate from Health Survey for England. 2003-2005 14 % Modelled estimate from Health Survey for England. 2003-2005 15 % Modelled estimate from Health Survey for England. 2003-2005 16 % aged 16+ 2005/06 17 % Modelled estimate from Health Survey for England. 2003-2005 18 % who self assessed general health as 'not good' (directly age standardised) 2001 19 Crude rate per 1,000 working age population. 2006 20 Directly age and sex standardised rate per 100,000 pop. 2006-2007 21 Crude rate per 1000 population aged 15-64. No significance calculated for lower tier authorities. 2004-2005 22 % of people on GP registers with a recorded diagnosis of diabetes. 2005-2006 23 Indicator blank as data not yet available for local authorities. 24 Per 100,000 population (3-year average crude rate) 2004-2006 25 Directly age-standardised rate for emergency admission 2006/07 26 At birth, years 2004-2006 27 At birth, years 2004-2006 28 Rate /1,000 live births 2004-06 29 Per 100,000 population age 35+, directly age standardised rate. 2004-2006 30 Directly age standardised rate/100,000 pop. under 75 2004-2006 31 Directly age standardised rate/100,000 pop. under 75 2004-2006 32 Per 100,000 population (3-year average crude rate) 2004-2006

For more information from your regional PHO, visit [www.apho.org.uk](http://www.apho.org.uk)

You may use this profile for non-commercial purposes provided the source is acknowledged. 'Source: APHO and Department of Health. © Crown Copyright 2008.'