

Have FUN Together!

Walking Jokes

Q: What do you get if you cross a centipede and a parrot?

A: A Walkie Talkie!

Q: Why did the runner quit the race against bigfoot?

A: He couldn't face defeat!

Q: What do you call a man who walks through autumn leaves?

A: Russell!

Q: What kind of shoes are made from banana skins?

A: Slippers!

Q: Why did the chicken cross the road?

A: To get to the other side!

Can you make up a walking joke?

Share it with your class and email us as well!
It might even get onto **Billy's Blog**.

Perhaps your teacher could get everyone in class to do this and then calculate how far the whole class travelled during the week. Even better, combine all the classes results and calculate the distance travelled for the whole school!

Now calculate how far you went in a week by multiplying the 2 numbers together

This week, I travelled **km on foot!**

How many times did you cycle **or walk to or from school?**

(Get an adult to help you work this out if you're not sure. Or, if you're a computer wiz kid, look it up on Google maps)

How far is it from your **house to school (in km)?**

Now, use the results to calculate how far you travelled during Walk to School Week

W2SW 09



This W2SW Booklet belongs to:

School:

Walk to School Week this May is all about Walking Together!

- Walking together to have fun
- Walking together to stay fit and healthy
- Walking together to save the environment
- Walking together to keep us safe

Monday	Tuesday	Wednesday	Thursday	Friday
To school				
From school				

Write down how you got to and from school each day in the table below. (You may want to use letters to do this e.g. W = Walk, C = Car...)?

How far will you Walk Together?



Walk to School Week
18th - 22nd May 2009

Remember to keep checking Billy's progress throughout the week on his blog.

Ask your teacher for an entry form.

The winning design will win a fabulous prize for yourself and your school!

Our competition for this W2SW is to design a badge to reward all our wonderful walkers throughout the county during the following W2SW!

Competition Time

- Last year over 28 237 pupils across Cornwall took part in W2SW that's enough to fill the Hall for Cornwall nearly 29 times!
- 100% of pupils from St Winnow C of E School walked to school in the last W2SW. Could your school be the next to get 100%?

Amazing Facts

Billy's having an unusual Walk to School Week this May as well!

He's hoping to travel all the way from Stratton in the North of Cornwall to Sennen in the West and, guess what?, he won't be getting into a car for the whole week!



* Bude
Stratton

Launceston *

* Padstow
* Wadebridge

* Bodmin

* Newquay

* Lostwithiel * Liskeard

Saltash *

Austell *

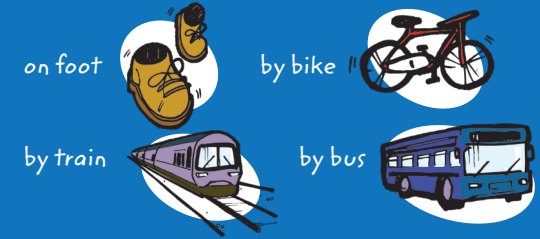
* St Ives * Redruth * Truro
* Camborne

* Sennen * Penzance

Falmouth *
* Helston

Walk together with Billy!

Billy is going to be travelling to schools all over Cornwall



Can you find out what Billy's been up to by looking at his blog?

Have a look in class every day and use the information to fill in the table.

www.cornwall.gov.uk/schooltravelplans



Billy's Big Adventure

Have a look on Billy's blog each day and draw his route on the map. You can find the blog by using the link on our website www.cornwall.gov.uk/schooltravelplans



	Monday	Tuesday	Wednesday	Thursday	Friday
How far did Billy Travel?					
Where did Billy Go?					
How did he get there?					