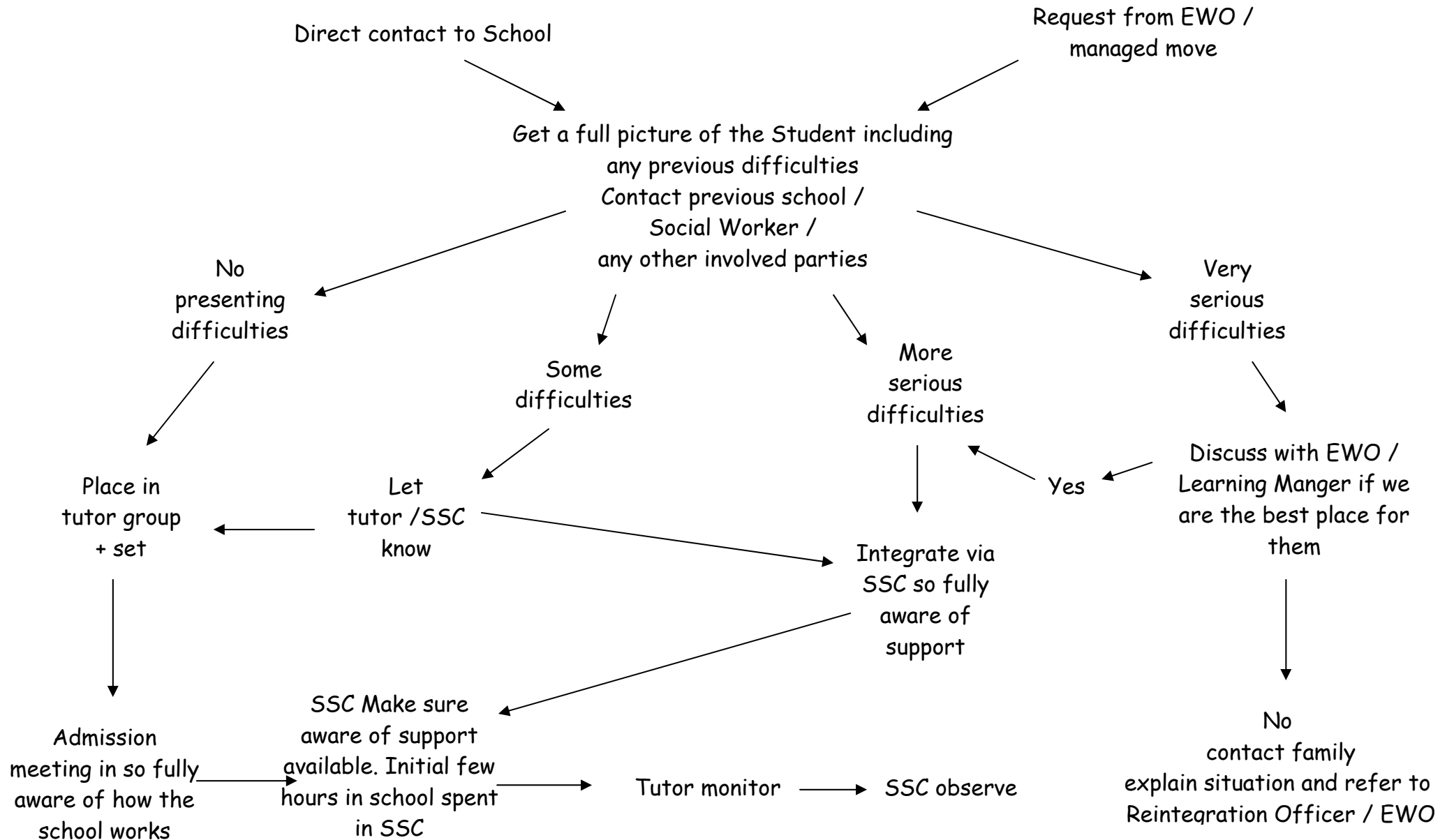
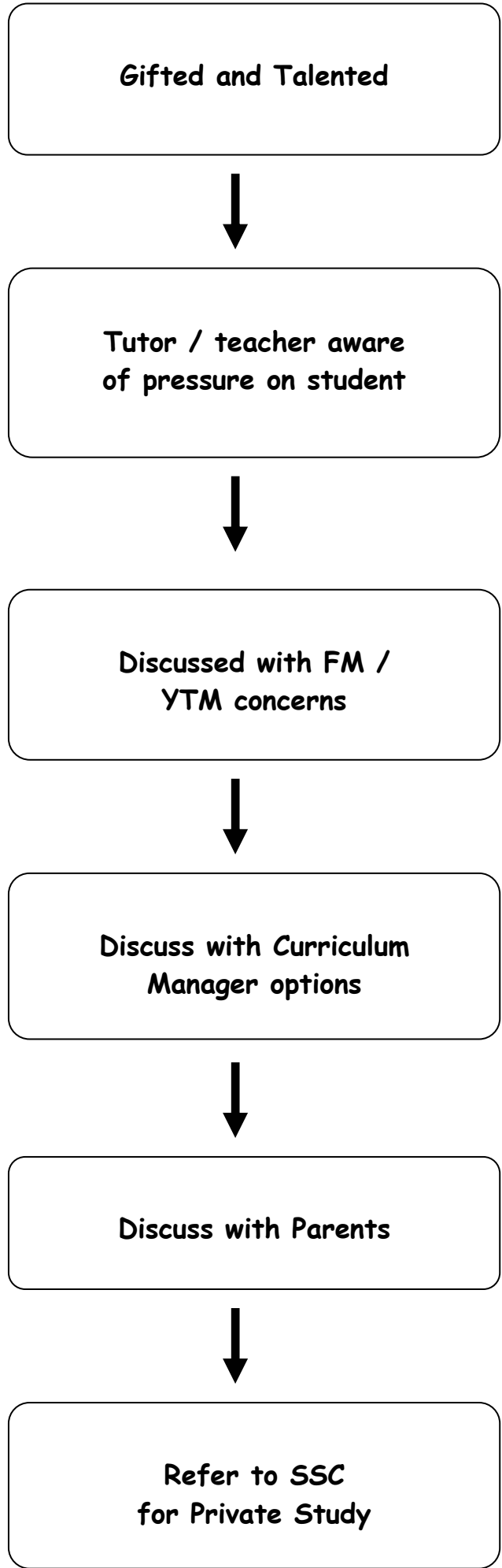
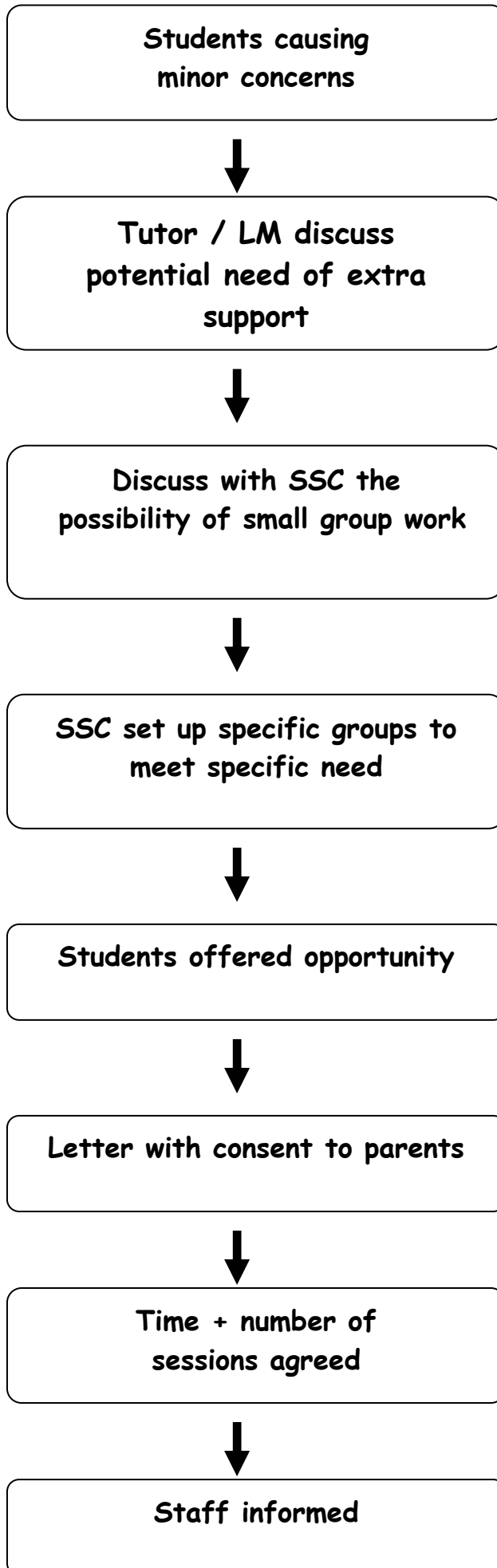


Admission of New Pupils







**Reintegration of
School Refusers**

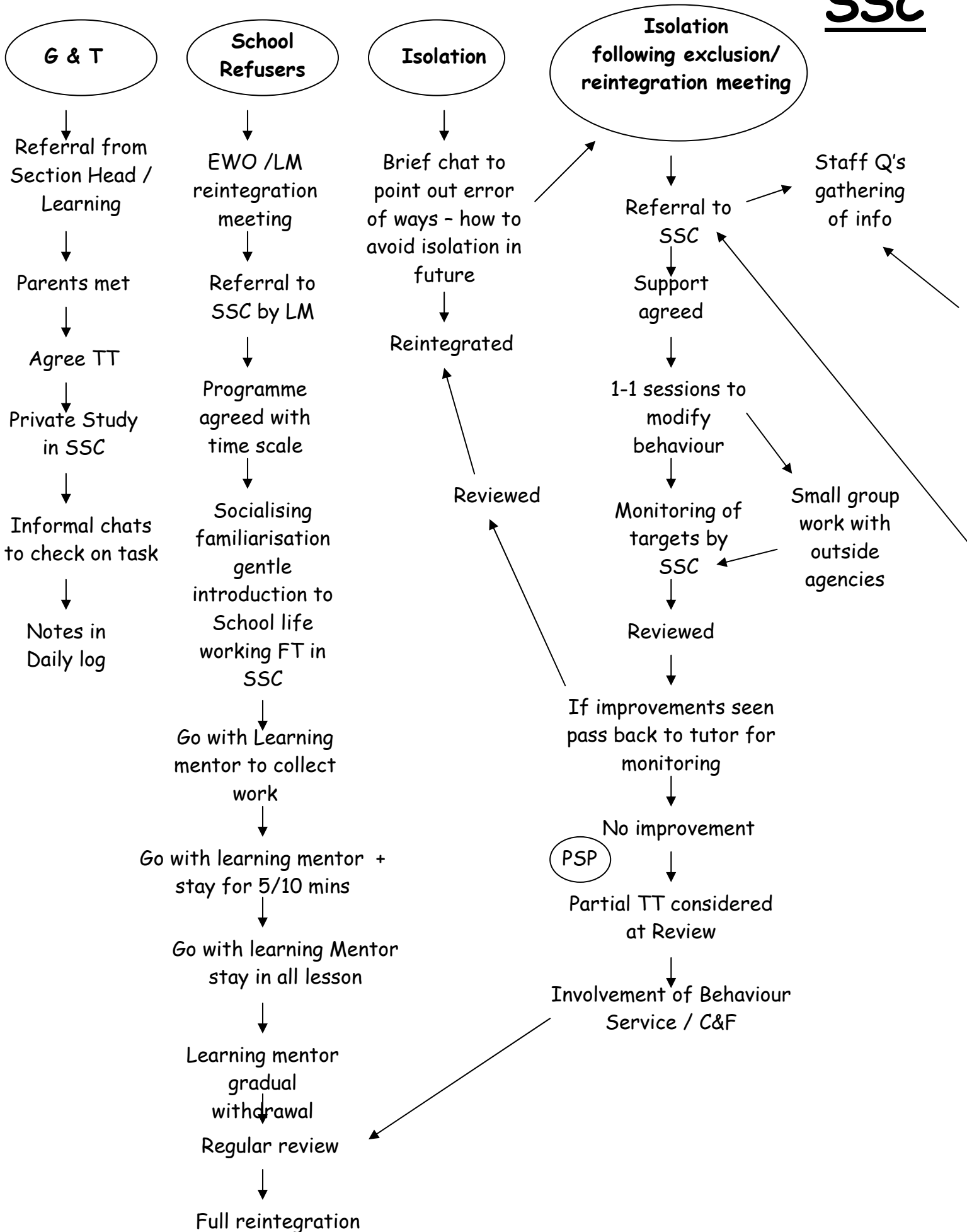


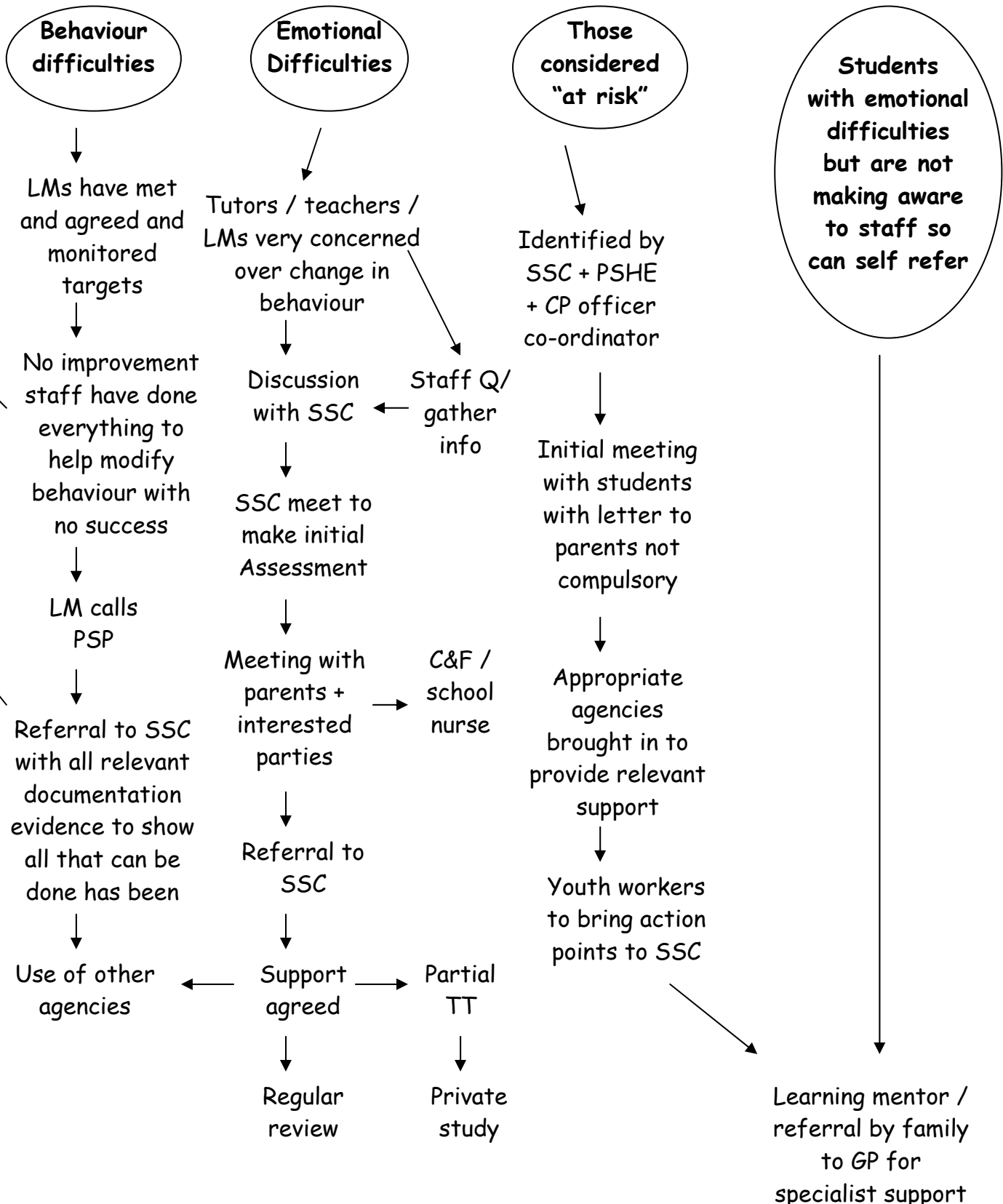
**EWO / LM
call reintegration
meeting inviting:-**

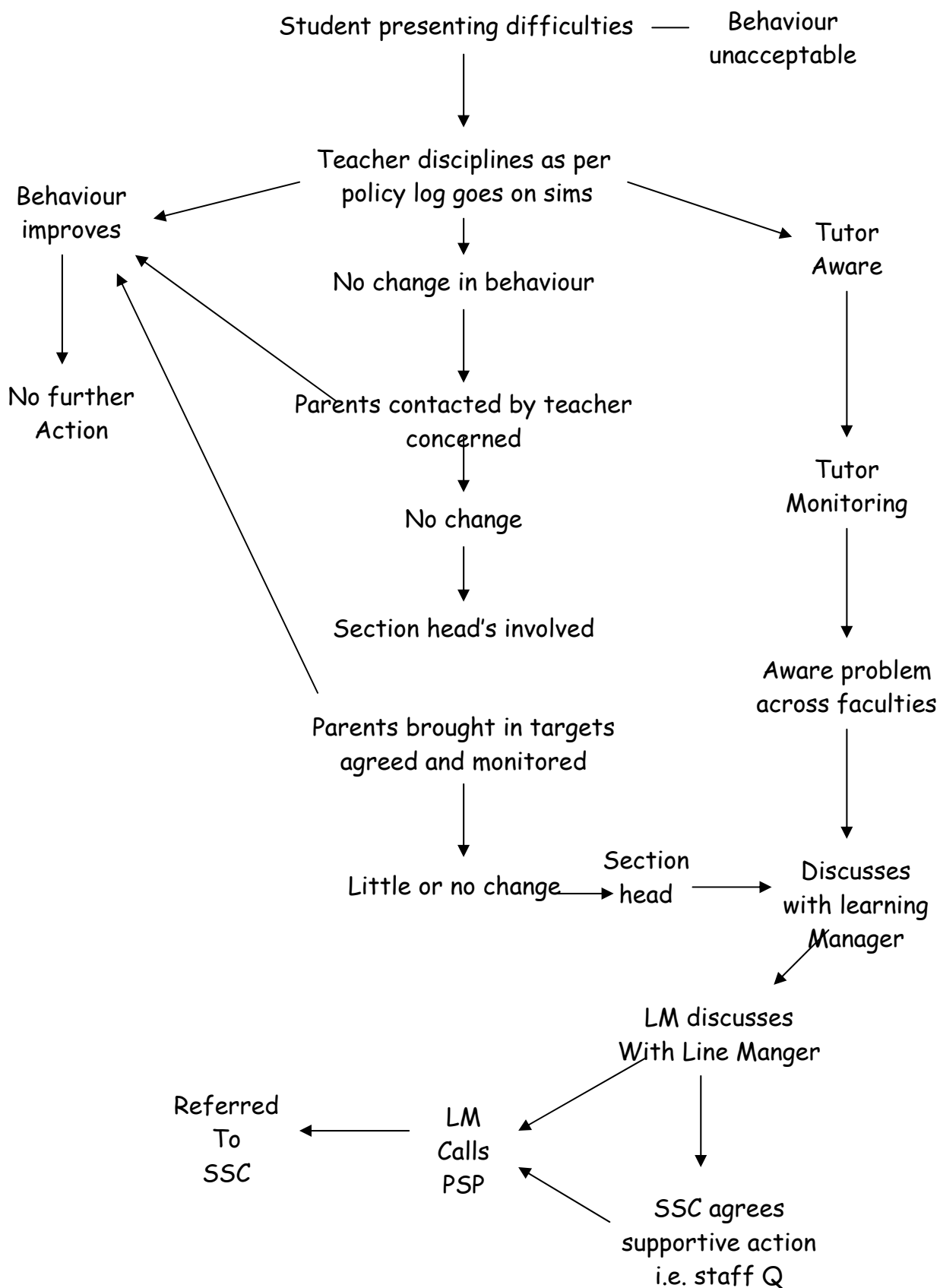
**All appropriate staff and
agencies depending on
individual**



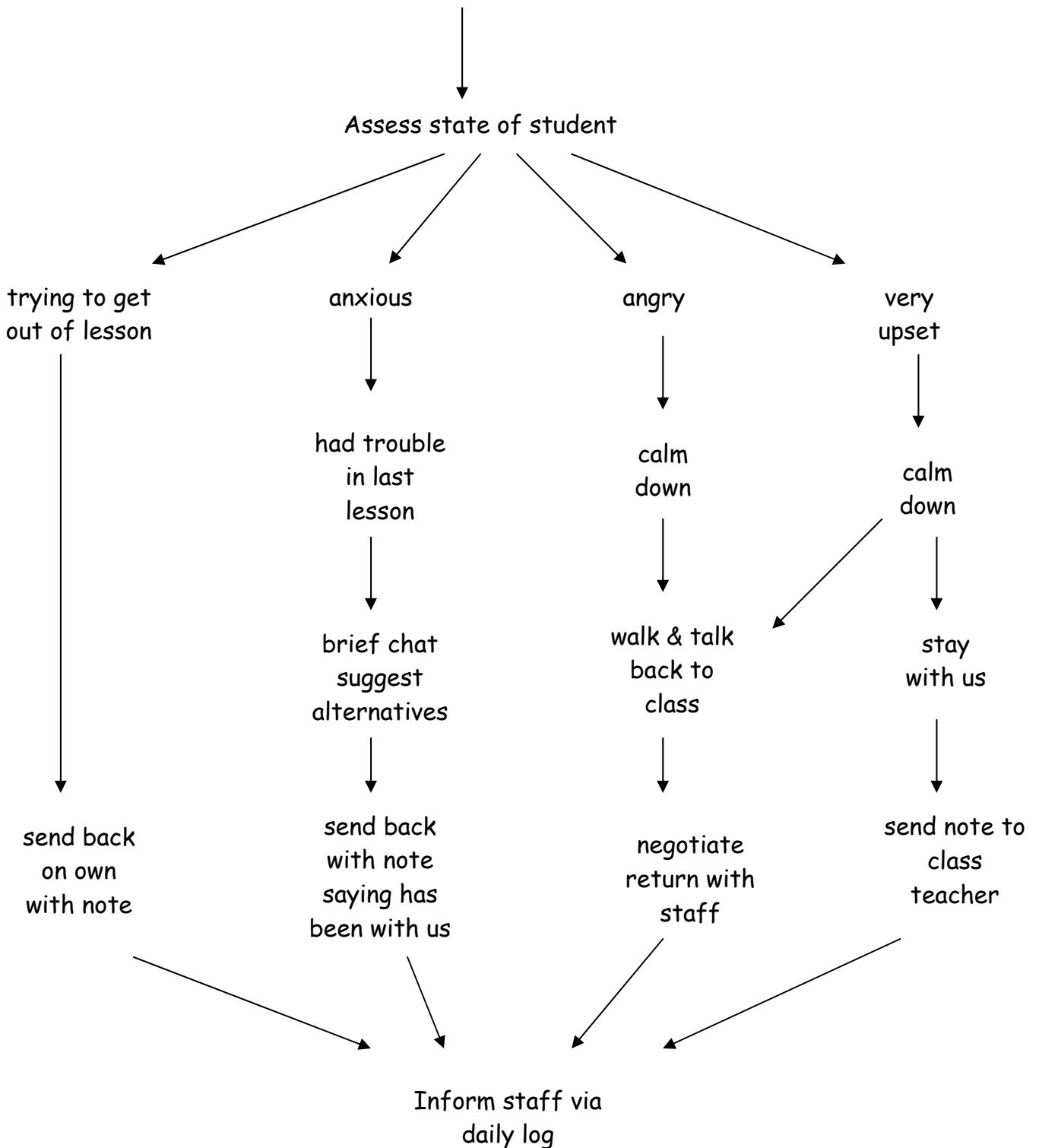
Programme agreed



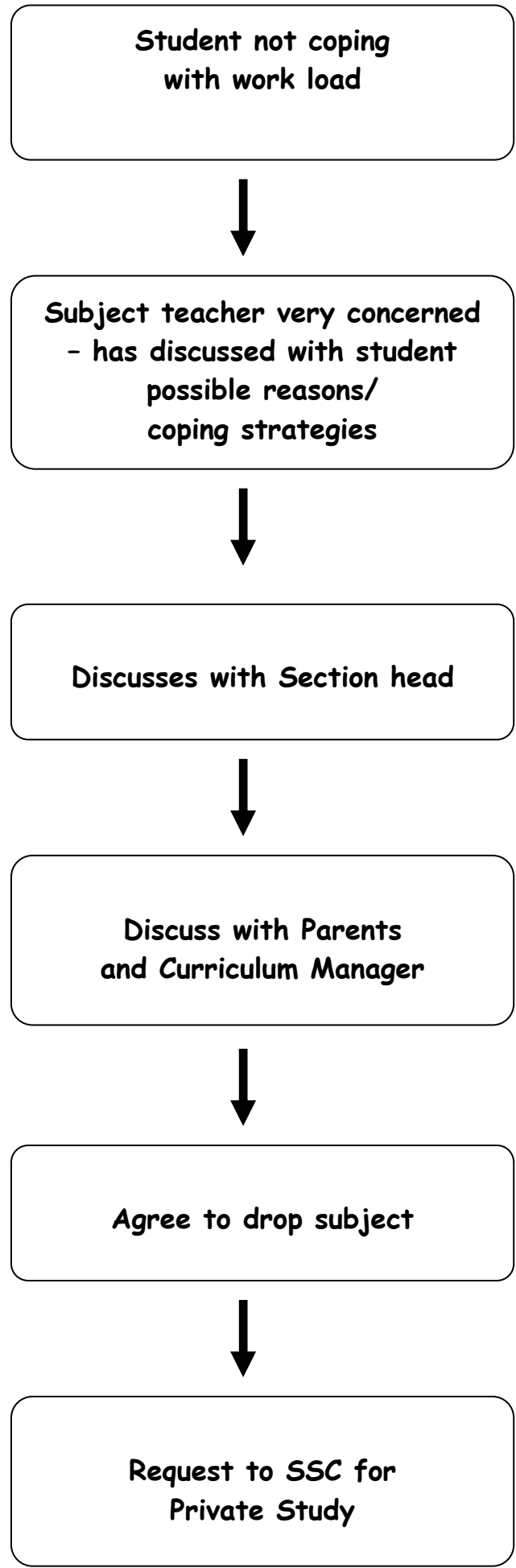




Unexpected Arrival



If a student is not in an appropriate state to return to class they are kept in SSC until able to do so. SSC staff will conduct any necessary negotiations



Student presenting worrying change in Behaviour

